



Installing or Accessing VMWare for Home Use

BE SURE TO LOG OFF WHEN YOU ARE DONE TO RELEASE YOUR SESSION

To log off: click on the Windows Start Icon  on left toolbar and then the People icon  and choose "sign out" and then close

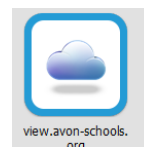
TEACHER OR ADMIN DELL LAPTOP:

- Type "Company Portal" in the search bar
- Click on the app to install
- Click "Add Server": view.avon-schools.org
- Restart your computer.
- Click icon on your desktop "VMware"
- Click "Add Server": view.avon-schools.org
- Staff Login: network username and password

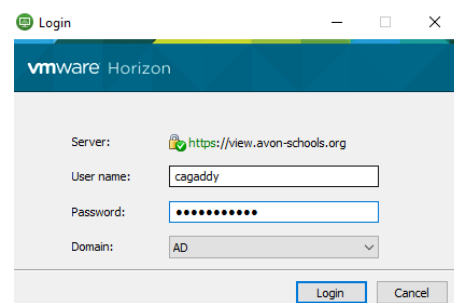
PERSONAL COMPUTERS:

- Click the following link to install the program: [Install VMware Horizon Client.](#)
- Choose the download that matches your computer model and operating system.
 - Click [HERE](#) for iOS directions.
- Download the program and then click "Run" to install the program.
- Follow the directions on the installation wizard. Begin by clicking "Yes"
- Click on "I agree" and install.
- Click on "Finish".
- Restart your computer.
- Click icon on your desktop "VMware" Click "Add Server": view.avon-schools.org.
 - Staff Login: network username and password

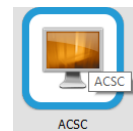
Click on the server.



Log in with network credentials.



Click on ACSC



Click on File Explorer (manila folder on task bar) to access network drives.

When finished, click on options, logoff & disconnect (top left menu).