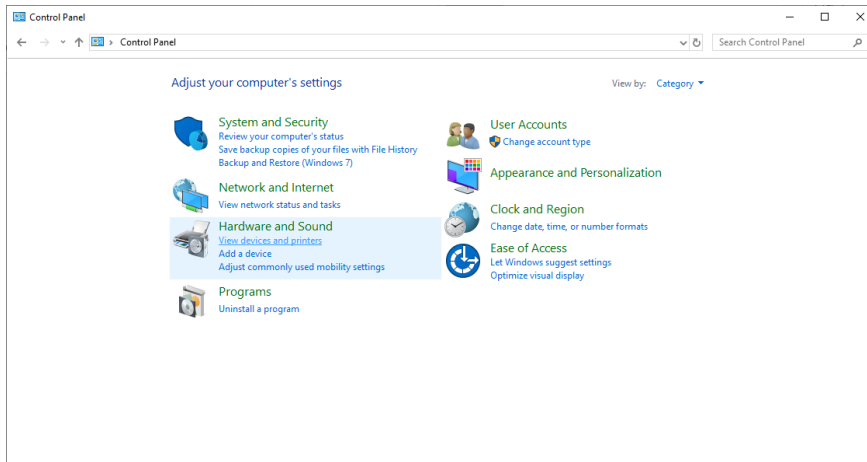
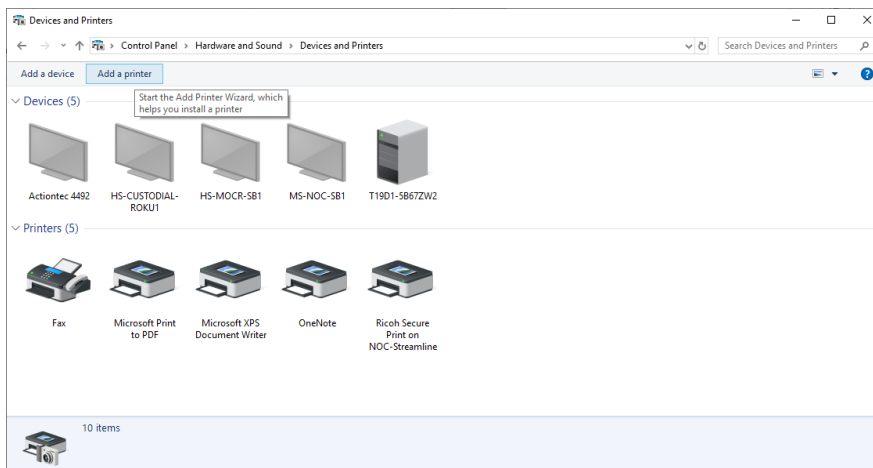


Staff New Dell Intune Device Printer Instructions

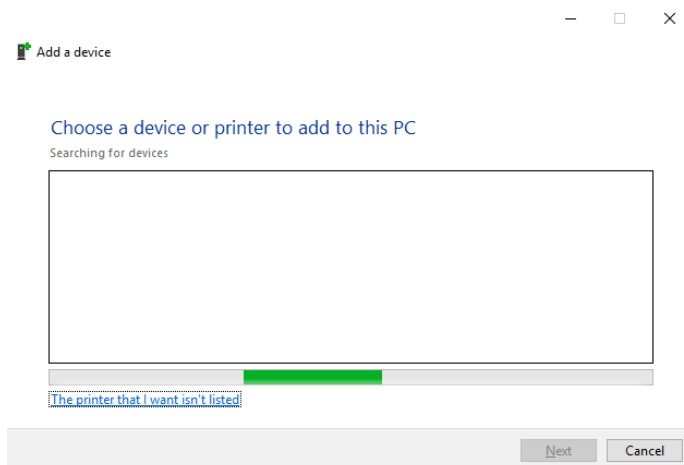
1. Open Control Panel from the Start menu.



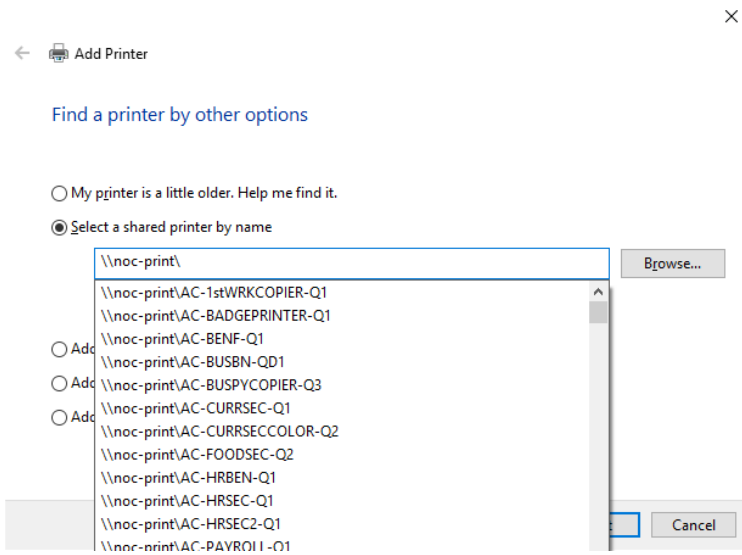
2. Click on 'View devices and printers' under 'Hardware and Sound'.



3. Click 'Add a printer.' In the pop up menu, click 'The printer that I want isn't listed'



4. Click 'Select a shared printer by name' and in the text box, type in '\\noc-print\' followed by the name of your printer (ex. \\noc-print\TS-TECHCOLOR-Q1)



5. Click 'Next' and wait for your device to locate the printer. Once it has been located and installed, you can close out the window and print to your device.